



# Full Permission Wall Textures Turquoise & White Trim Pattern v.01

The background textures used in walls are repeating and seamless. Trims are created from stock images to be repeating.

Wall moldings are added to the base background (Image 0). The moldings are added one at a time and numbers sequentially (1,2,3....). Rails and boards include Crown, Picture, Chair and Skirting.

Image 0 has no rails. Just the wall texture.

Image 1 has the baseboard.

Image 2 adds the Top board.

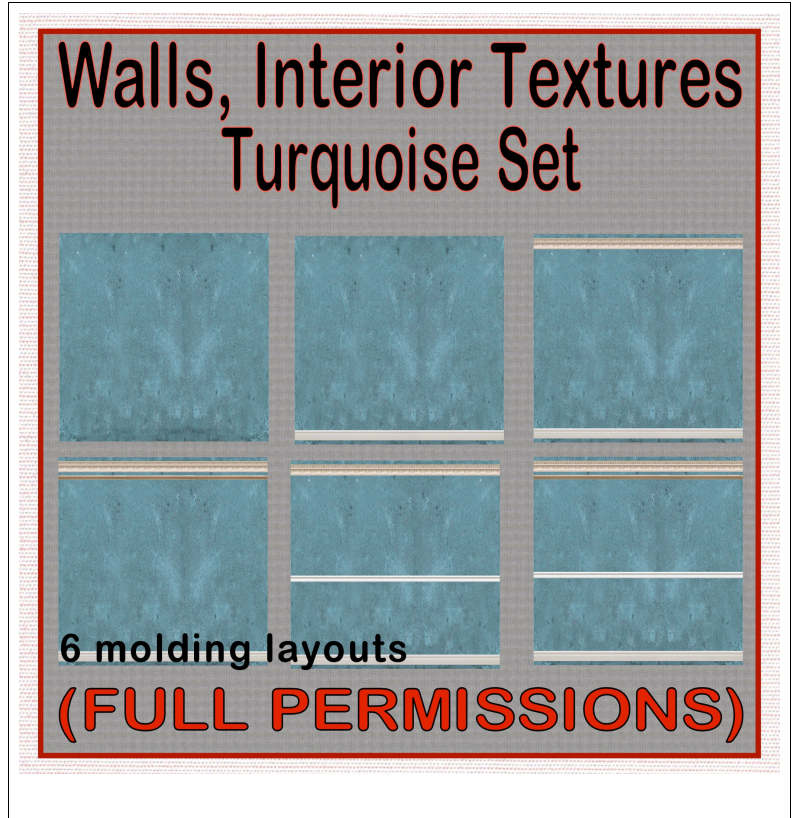
Image 3 adds the picture rail.

Image 4 removes the picture rail and adds the chair rail

Image 5 has all rails.

I have a few different boards and rails that are included as an additoinal box. It and the Image 0 will give you some freedom to modify the textures to your liking.

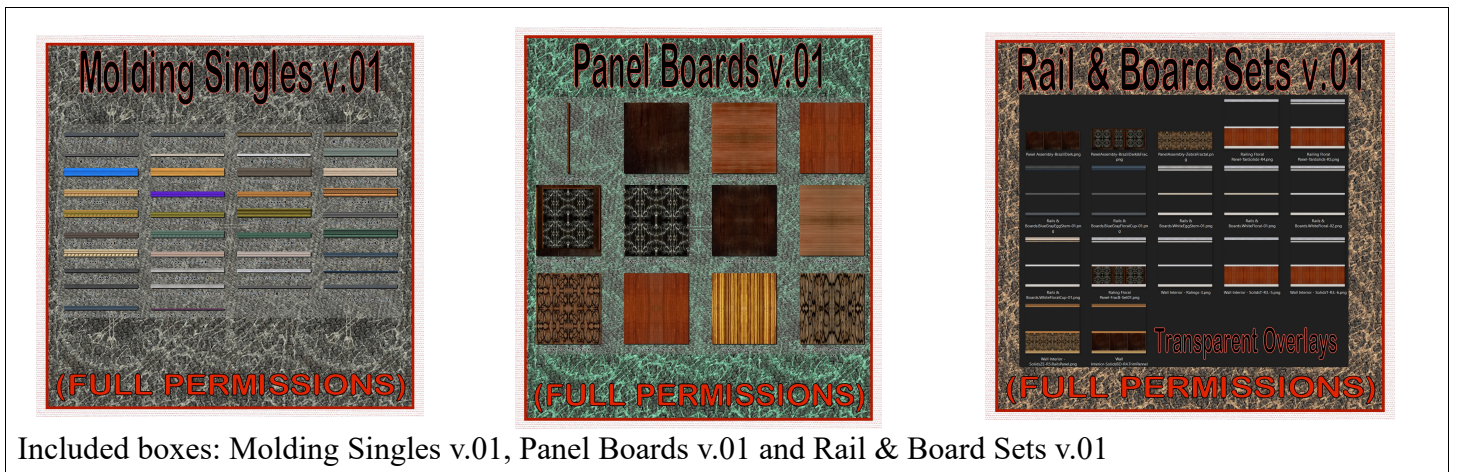
The Texture Gallery will have more displays and a HUD and Wall display that allow you to view the textures with separate rails and boards.



## FEATURES

- Full Permissions
- 6 textures
- Additona boxes with Boards, Rails and Panel Textures.

The items can be seen at AJ's Texture Gallery: <http://maps.secondlife.com/secondlife/Akhsharumova/160/144/77>



## TOS

Copyable products can be redelivered. If you lose your items, both the SL Marketplace and CasperVend systems can redeliver your purchase.

Please do not resale these textures and patterns by themselves in Second Life. Do not sell them on other Vrs without permission. Do not use them in RL products. Contact me in SL for any other SL or RL use. In SL, they must be part of a build and not as Full Permissions. (Full Perm). Refer to the Second Life Terms of Service <https://www.lindenlab.com/legal/second-life-terms-and-conditions>

## **UNPACKING CASPERVEND**

CasperVend items come in a box and will probably show up in your Objects Folder. You'll need to rez the box and open it to copy to your inventory. Since there are no copy permissions, you'll get a message that they have to move to inventory. There is a Sandbox on the Milda shops.

## **UNPACKING SL MARKETPLACE**

Markerplace purchases most likely will not be boxed and can be viewed in the contents tab on the product page. Those items will go to your Received Items Folder in your Inventory. Items with no copy permissions, will move in and out of inventory as you rez them and take them back.

## **ADDITIONAL INFORMATION**

The TCGWS project homepage is <http://sl.thunderchild.net> and the Artist's homepage is <http://thunderchild.net>. Special arrangements and designs are available by contacting the artist in-World (Thunderchild Allen aka AJ Leibengeist).

## **AVAILABILITY**

This product is available in Second Life (SL).

RL products are provided by third-party on-demand companies including [RedBubble.com](http://RedBubble.com), [Society6.com](http://Society6.com), [Spoonflower.com](http://Spoonflower.com) and Amazon Merchant.